

# Data Protection Policy

<b>Date Reviewed</b>	<b>July 2024</b>
<b>Date Agreed with Trustees</b>	
<b>Date to be reviewed</b>	<b>July 2027</b>

## Contents

1. Aims.....	3
2. Legislation and guidance.....	3
3. Definitions.....	3
4. The Data Controller.....	5
5. Roles and responsibilities.....	5
6. Data protection principles.....	6
7. Collecting personal data.....	6
8. Sharing personal data.....	7
9. Subject access requests and other rights of individuals.....	8
10. Biometric recognition systems.....	11
11. CCTV.....	11
12. Photographs and videos.....	12
13. Data protection by design and default.....	12
14. Data security and storage of records.....	13
15. Disposal of records.....	14
16. Personal data breaches.....	14
17. Training.....	14
18. Monitoring arrangements.....	14
19. Links with other policies.....	15

## 1. Aims

Endeavour MAT aims to ensure that all personal data collected about staff, students, parents, governors, visitors and other individuals is collected, stored and processed in accordance with the Data Protection Act 2018 (DPA 2018).

This policy applies to all schools within Endeavour MAT – currently:

Stone Lodge School  
Wilmington Grammar School for Boys  
Wilmington Grammar School for Girls  
Wilmington Primary School

All references to “The Trust” refer to Endeavour MAT and all associated schools therein.  
This policy applies to all personal data, regardless of whether it is in paper or electronic format.

## 2. Legislation and guidance

This policy meets the requirements of the Data Protection Act 2018 (DPA). It is based on guidance published by the Information Commissioner’s Office (ICO) on the [DPA](#) and the ICO’s [code of practice for subject access requests](#).

It meets the requirements of the [Protection of Freedoms Act 2012](#) when referring to our use of biometric data.

It also reflects the ICO’s [code of practice](#) for the use of surveillance cameras and personal information.

In addition, this policy complies with our funding agreement and articles of association.

## 3. Definitions

Term	Definition
<b>Personal data</b>	Any information relating to an identified, or identifiable, individual. This may include the individual’s: <ul style="list-style-type: none"><li>• Name (including initials)</li><li>• Identification number</li><li>• Location data</li><li>• Online identifier, such as a username</li></ul>

	It may also include factors specific to the individual's physical, physiological, genetic, mental, economic, cultural or social identity.
<b>Special categories of personal data</b>	<p>Personal data which is more sensitive and so needs more protection, including information about an individual's:</p> <ul style="list-style-type: none"> <li>• Racial or ethnic origin</li> <li>• Political opinions</li> <li>• Religious or philosophical beliefs</li> <li>• Trade union membership</li> <li>• Genetics</li> <li>• Biometrics (such as fingerprints, retina and iris patterns), where used for identification purposes</li> <li>• Health – physical or mental</li> <li>• Sex life or sexual orientation</li> </ul>
<b>Processing</b>	<p>Anything done to personal data, such as collecting, recording, organising, structuring, storing, adapting, altering, retrieving, using, disseminating, erasing or destroying. Processing can be automated or manual.</p>
<b>Data Subject</b>	The identified or identifiable individual whose personal data is held or processed.
<b>Data Controller</b>	A person or organisation that determines the purposes and the means of processing of personal data.
<b>Data Processor</b>	A person or other body, other than an employee of the data controller, who processes personal data on behalf of the data controller.
<b>Personal data breach</b>	A breach of security leading to the accidental or unlawful destruction, loss, alteration, unauthorised disclosure of, or access to personal data.

## 4. The Data Controller

Endeavour MAT processes personal data relating to parents, students, staff, governors, visitors and others, and therefore is a data controller.

The MAT is registered as a data controller with the ICO and will renew this registration annually or as otherwise legally required.

## 5. Roles and responsibilities

This policy applies to **all staff** employed by Endeavour MAT, and to external organisations or individuals working on our behalf. Staff who do not comply with this policy may face disciplinary action.

### 5.1 Trust Board

Endeavour MAT Board of Trustees has overall responsibility for ensuring that our schools comply with all relevant data protection obligations.

### 5.2 Data Protection Officer

The Data Protection Officer (DPO) is responsible for overseeing the implementation of this policy, monitoring our compliance with data protection law, and developing related policies and guidelines where applicable.

They will provide an annual report of their activities directly to the Trust Board and, where relevant, report to the Board and the Local Governing Bodies their advice and recommendations on school data protection issues.

The DPO is also the first point of contact for individuals whose data the Trust processes, and for the ICO.

Full details of the DPO's responsibilities are set out in their job description.

Our DPO is contactable via email at [dpo@endeavour-mat.co.uk](mailto:dpo@endeavour-mat.co.uk)

### 5.3 Headteacher

The headteacher of each school within The Trust has been delegated responsibility for data protection compliance within their school and acts as the representative of the data controller on a day-to-day basis.

### 5.4 All staff

Staff are responsible for:

- Collecting, storing and processing any personal data in accordance with this policy

- Informing their school of any changes to their personal data, such as a change of address
- Contacting the DPO in the following circumstances:
  - With any questions about the operation of this policy, data protection law, retaining personal data or keeping personal data secure
  - If they have any concerns that this policy is not being followed
  - If they are unsure whether they have a lawful basis to use personal data in a particular way
  - If they need to rely on or capture consent, draft a privacy notice, deal with data protection rights invoked by an individual, or transfer personal data outside the European Economic Area
  - If there has been a data breach
  - Whenever they are engaging in a new activity that may affect the privacy rights of individuals
  - If they need help with any contracts or sharing personal data with third parties

## 6. Data protection principles

The Data Protection Act is based on data protection principles that the Trust must comply with.

The principles say that personal data must be:

- Processed lawfully, fairly and in a transparent manner
- Collected for specified, explicit and legitimate purposes
- Adequate, relevant and limited to what is necessary to fulfil the purposes for which it is processed
- Accurate and, where necessary, kept up to date
- Kept for no longer than is necessary for the purposes for which it is processed
- Processed in a way that ensures it is appropriately secure

This policy sets out how the Trust aims to comply with these principles.

## 7. Collecting personal data

### 7.1 Lawfulness, fairness and transparency

We will only process personal data where we have one of 6 'lawful bases' (legal reasons) to do so under data protection law:

- The data needs to be processed so that the Trust can **fulfil a contract** with the individual, or the individual has asked the Trust to take specific steps before entering into a contract

- The data needs to be processed so that the Trust can **comply with a legal obligation**
- The data needs to be processed to ensure the **vital interests** of the individual e.g. to protect someone's life
- The data needs to be processed so that the Trust, as a public authority, can perform a task **in the public interest**, and carry out its official functions
- The data needs to be processed for the **legitimate interests** of the Trust or a third party (provided the individual's rights and freedoms are not overridden)
- The individual (or their parent/carer when appropriate in the case of a student) has freely given clear **consent**

For special categories of personal data, we will also meet one of the special category conditions for processing which are set out in the Data Protection Act 2018.

If we offer online services to students, such as classroom apps, and we intend to rely on consent as a basis for processing, we will get parental consent where the student is under 13 (except for online counselling and preventive services).

Whenever we first collect personal data directly from individuals, we will provide them with the relevant information required by data protection law.

## **7.2 Limitation, minimisation and accuracy**

We will only collect personal data for specified, explicit and legitimate reasons. We will explain these reasons to the individuals when we first collect their data.

If we want to use personal data for reasons other than those given when we first obtained it, we will inform the individuals concerned before we do so, and seek consent where necessary.

Staff must only process personal data where it is necessary in order to do their jobs. When staff no longer need the personal data they hold, they must ensure it is deleted or anonymised. This will be done in accordance with the guidelines of the Endeavour MAT Data Retention Policy.

## **8. Sharing personal data**

We will not normally share personal data with anyone else, but may do so where:

- There is an issue with a student or parent/carer that puts the safety of our staff at risk
- We need to liaise with other agencies – we will seek consent as necessary before doing this
- Our suppliers or contractors need data to enable us to provide services to our staff and students – for example, IT companies. When doing this, we will:

- Only appoint suppliers or contractors which can provide sufficient guarantees that they comply with data protection law
- Establish a data sharing agreement with the supplier or contractor, either in the contract or as a standalone agreement, to ensure the fair and lawful processing of any personal data we share
- Only share data that the supplier or contractor needs to carry out their service, and information necessary to keep them safe while working with us

We will also share personal data with law enforcement and government bodies where we are legally required to do so, including for:

- The prevention or detection of crime and/or fraud
- The apprehension or prosecution of offenders
- The assessment or collection of tax owed to HMRC
- In connection with legal proceedings
- Where the disclosure is required to satisfy our safeguarding obligations
- Research and statistical purposes, as long as personal data is sufficiently anonymised or consent has been provided

We may also share personal data with emergency services and local authorities to help them to respond to an emergency situation that affects any of our students or staff.

Where we transfer personal data to a country or territory outside the European Economic Area, we will do so in accordance with data protection law.

## **9. Subject access requests and other rights of individuals**

### **9.1 Subject access requests**

Individuals have a right to make a 'subject access request' to gain access to personal information that the Trust holds about them. This includes:

- Confirmation that their personal data is being processed
- Access to a copy of the data
- The purposes of the data processing
- The categories of personal data concerned
- Who the data has been, or will be, shared with
- How long the data will be stored for, or if this isn't possible, the criteria used to determine this period
- The source of the data, if not the individual



Whether any automated decision-making is being applied to their data, and what the significance and consequences of this might be for the individual

Subject access requests should preferably be submitted in writing, either by letter or email to the DPO. They should include:

- Name of individual
- Correspondence address
- Contact number and email address
- Details of the information requested

If staff receive a subject access request, they must immediately forward it to the DPO at [dpo@endeavour-mat.co.uk](mailto:dpo@endeavour-mat.co.uk).

## **9.2 Children and subject access requests**

Personal data about a child belongs to that child, and not the child's parents or carers. For a parent or carer to make a subject access request with respect to their child, the child must either be unable to understand their rights and the implications of a subject access request, or have given their consent.

Children aged 12 and above are generally regarded to be mature enough to understand their rights and the implications of a subject access request. Therefore, most subject access requests from parents or carers of students at our Trust schools may not be granted without the express permission of the student. This is not a rule and a student's ability to understand their rights will always be judged on a case-by-case basis.

## **9.3 Responding to subject access requests**

When responding to requests, we:

- May ask the individual to provide 2 forms of identification
- May contact the individual via phone to confirm the request was made
- Will respond without delay and within 30 days of receipt of the request
- Will provide the information free of charge
- May tell the individual we will comply within 3 months of receipt of the request, where a request is complex or numerous. We will inform the individual of this within 30 days, and explain why the extension is necessary

We will not disclose information if it:

- Might cause serious harm to the physical or mental health of the student or another individual

- Would reveal that the child is at risk of abuse, where the disclosure of that information would not be in the child's best interests
- Is contained in adoption or parental order records
- Is given to a court in proceedings concerning the child

If the request is unfounded or excessive, we may refuse to act on it, or charge a reasonable fee which takes into account administrative costs.

A request will be deemed to be unfounded or excessive if it is repetitive, or asks for further copies of the same information.

When we refuse a request, we will tell the individual why, and tell them they have the right to complain to the ICO.

#### **9.4 Other data protection rights of the individual**

In addition to the right to make a subject access request (see above), and to receive information when we are collecting their data about how we use and process it (see section 7), individuals also have the right to:

- Withdraw their previously given consent to processing at any time
- Ask us to rectify, erase or restrict processing of their personal data, or object to the processing of it (in certain circumstances)
- Prevent use of their personal data for direct marketing
- Challenge processing which has been justified on the basis of public interest
- Request a copy of agreements under which their personal data is transferred outside of the European Economic Area
- Object to decisions based solely on automated decision making or profiling (decisions taken with no human involvement, that might negatively affect them)
- Prevent processing that is likely to cause damage or distress
- Be notified of a data breach in certain circumstances
- Make a complaint to the ICO
- Ask for their personal data to be transferred to a third party in a structured, commonly used and machine-readable format (in certain circumstances)

Individuals should submit any request to exercise these rights to the DPO. If staff receive such a request, they must immediately forward it to the DPO.

## **10. Biometric recognition systems**

At this current time there are no biometric recognition systems in use in the Trust. Should we decide to use such systems in the future we will comply with the requirements of the [Protection of Freedoms Act 2012](#).

Parents/carers will be notified before any biometric recognition system is put in place or before their child first takes part in it. The Trust will get written consent from at least one parent or carer before we take any biometric data from their child and first process it.

Parents/carers and students will have the right to choose not to use the Trust's biometric system(s). We will provide alternative means of accessing the relevant services for those students.

Parents/carers and students will be able to object to participation in the Trust's biometric recognition system(s), or withdraw consent, at any time, and we will make sure that any relevant data already captured is deleted.

As required by law, if a student refuses to participate in, or continue to participate in, the processing of their biometric data, we will not process that data irrespective of any consent given by the student's parent(s)/carer(s).

Where staff members or other adults use the Trust's biometric system(s), we will also obtain their consent before they first take part in it, and provide alternative means of accessing the relevant service if they object. Staff and other adults can also withdraw consent at any time, and the Trust will delete any relevant data already captured.

## **11. CCTV**

We use CCTV in various locations around the Trust sites to ensure they remain safe. Endeavour MAT's CCTV Policy adhere's to the ICO's [code of practice](#) for the use of CCTV

We do not need to ask individuals' permission to use CCTV, but we make it clear where individuals are being recorded. Security cameras are clearly visible and accompanied by prominent signs explaining that CCTV is in use. CCTV images are held for 30 days after which they are overwritten.

Any enquiries about the CCTV system should be directed to Chief Operating Officer, Endeavour MAT: [enquiries@endeavour-mat.co.uk](mailto:enquiries@endeavour-mat.co.uk)

## **12. Photographs and videos**

As part of our schools' activities, we may take photographs and record images of individuals within our schools.

We will obtain written consent from parents/carers, or students aged 16 and over, for photographs and videos to be taken of students for communication, marketing and promotional materials.

Where we need parental consent, we will clearly explain how the photograph and/or video will be used to both the parent/carer and student. Where we do not need parental consent, we will clearly explain to the student and parent/carer how the photograph and/or video will be used.

Uses may include:

- Within schools on notice boards and in school magazines, brochures, newsletters, etc.
- Outside of the Trust by external agencies such as the school photographer, newspapers, campaigns
- Online on the Trust's websites or social media pages
- Staff training/coaching purposes.

Consent can be refused or withdrawn at any time. If consent is withdrawn, we will delete the photograph or video and not distribute it further.

When using photographs and videos in this way we will not accompany them with any other personal information about the student, to ensure they cannot be identified.

## **13. Data protection by design and default**

We will put measures in place to show that we have integrated data protection into all our data processing activities, including:

- Appointing a suitably qualified DPO, and ensuring they have the necessary resources to fulfil their duties and maintain their expert knowledge
- Only processing personal data that is necessary for each specific purpose of processing, and always in line with the data protection principles set out in relevant data protection law (see section 6)
- Completing privacy impact assessments where the Trust's processing of personal data presents a high risk to rights and freedoms of individuals, and when introducing new technologies (the DPO will advise on this process)
- Integrating data protection into internal documents including this policy, any related policies and privacy notices

- Regularly training members of staff on data protection law, this policy, any related policies and any other data protection matters; we will also keep a record of attendance
- Regularly conducting reviews and audits to test our privacy measures and make sure we are compliant
- Maintaining records of our processing activities, including:
  - For the benefit of data subjects, making available the name and contact details of our Trust and DPO and all information we are required to share about how we use and process their personal data (via our privacy notices)
  - For all personal data that we hold, maintaining an internal record of the type of data, data subject, how and why we are using the data, any third-party recipients, how and why we are storing the data, retention periods and how we are keeping the data secure

## **14. Data security and storage of records**

We will protect personal data and keep it safe from unauthorised or unlawful access, alteration, processing or disclosure, and against accidental or unlawful loss, destruction or damage.

In particular:

- Paper-based records and portable electronic devices, such as laptops and hard drives that contain personal data are kept under lock and key when not in use
- Papers containing confidential personal data must not be left on office and classroom desks, on staffroom tables, pinned to notice/display boards, or left anywhere else where there is general access
- Where personal information needs to be taken off site, staff must sign it in and out from the relevant school office
- Passwords that are at least 8 characters long containing letters and numbers are used to access school computers, laptops and other electronic devices. Staff are reminded of the need to change their password if it has been compromised and to not share their password with anyone
- Encryption software is used to protect all portable devices and removable media that are available for use by staff to hold or store data
- Staff, governors and Trustees are able to view and respond to emails on personal devices but are not permitted to save or store personal data to any non Trust-owned device
- Where we need to share personal data with a third party, we carry out due diligence and take reasonable steps to ensure it is stored securely and adequately protected (see section 8).

## 15. Disposal of records

Personal data that is no longer needed will be disposed of securely. Personal data that has become inaccurate or out of date will also be disposed of securely, where we cannot or do not need to rectify or update it.

For example, we will shred or incinerate paper-based records, and overwrite or delete electronic files. We may also use a third party to safely dispose of records on the Trust's behalf. If we do so, we will require the third party to provide sufficient guarantees that it complies with data protection law.

## 16. Personal data breaches

The Trust will make all reasonable endeavours to ensure that there are no personal data breaches.

In the unlikely event of a suspected data breach, we will follow the procedure set out in the Procedure for Reporting a Data Breach.

When appropriate, we will report the data breach to the ICO within 72 hours. Such breaches in a Trust context may include, but are not limited to:

- A non-anonymised dataset being published on one of the Trust websites which shows the exam results of students eligible for the student premium
- Safeguarding information being made available to an unauthorised person
- Ransomware attack on one of the Trust networks.

## 17. Training

All staff and governors are provided with data protection training as part of their induction process.

Data protection will also form part of continuing professional development, where changes to legislation, guidance or the Trust's processes make it necessary.

## 18. Monitoring arrangements

The DPO is responsible for the monitoring and review of this policy.

This policy will be reviewed and updated if any changes are made to the Data Protection Act 2018 that affect our Trusts practices. Otherwise this policy will be reviewed **every 3 years**,

agreed by Endeavour Mat Trust Board and shared with the individual school Local Governing Bodies. A copy of this policy will be available on all Trust websites.

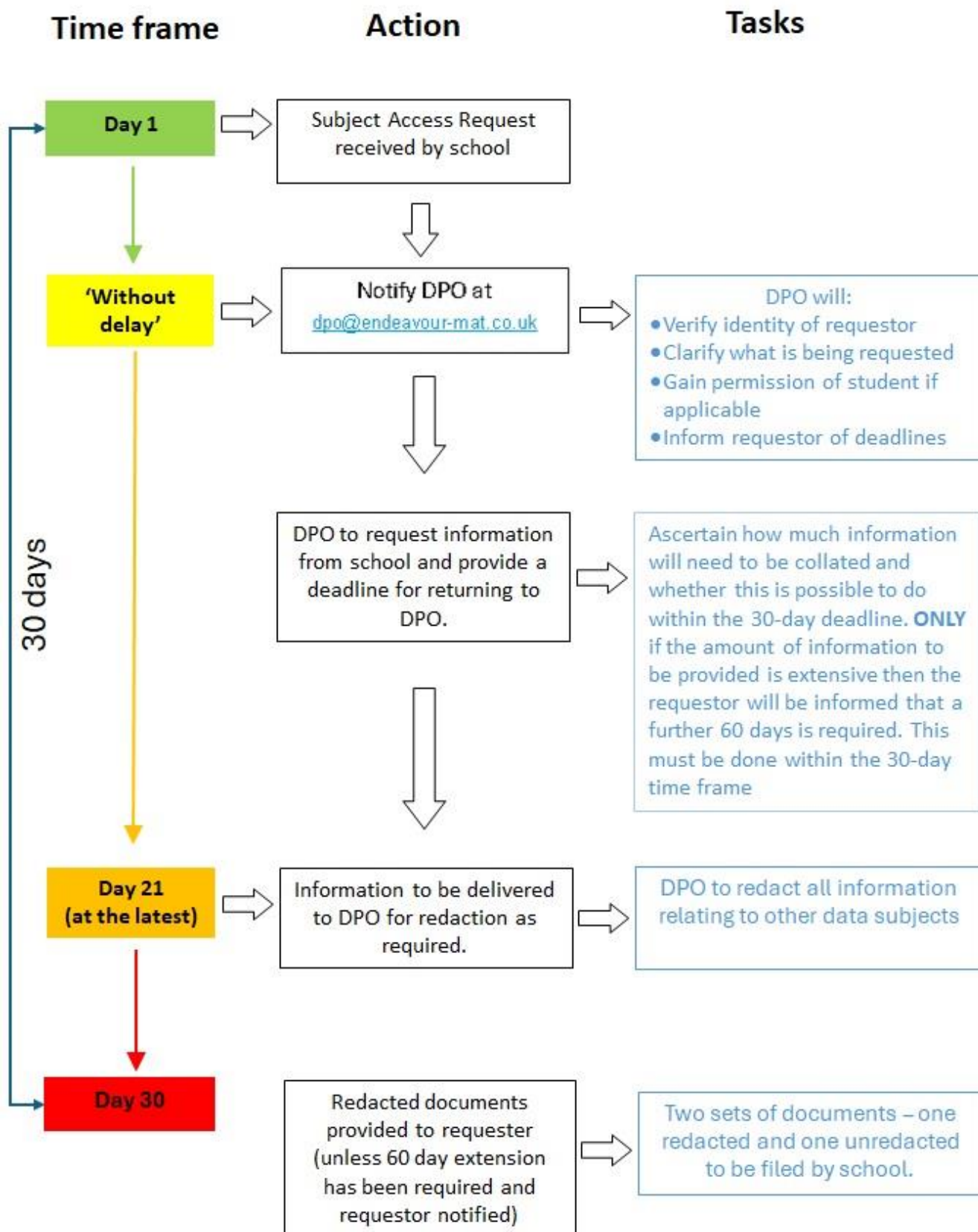
## **19. Links with other policies and procedures**

This data protection policy is linked to our:

- Endeavour MAT Freedom of Information Policy
- Endeavour MAT Data Retention Policy
- Endeavour MAT CCTV Policy
- Endeavour MAT Privacy Notices
- Endeavour MAT code of conduct, practice and protocols for staff
- Endeavour MAT Procedure for Reporting a Data Breach
- Endeavour MAT Subject Access Request Procedures

## APPENDIX 1

### Flow Chart for action when receiving a Subject Access Request





## APPENDIX 2

### Flow Chart for action upon discovery of a data breach

